

Contact: Pamela Wolf
Tel: +1-847-674-7143 (USA)
email: pwolf@norfolkmedical.com
website: www.norfolkvetproducts.com

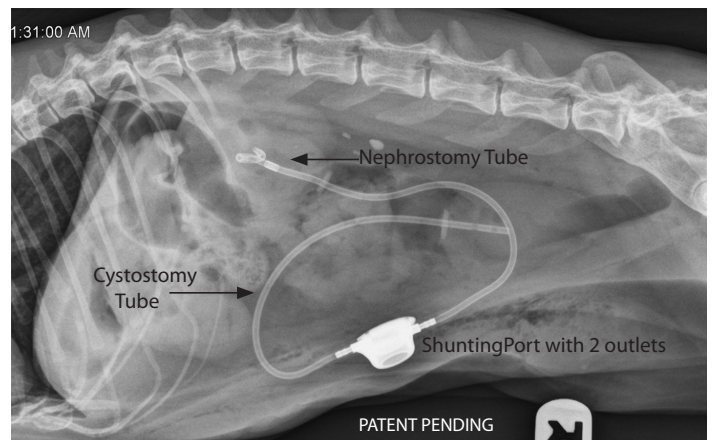
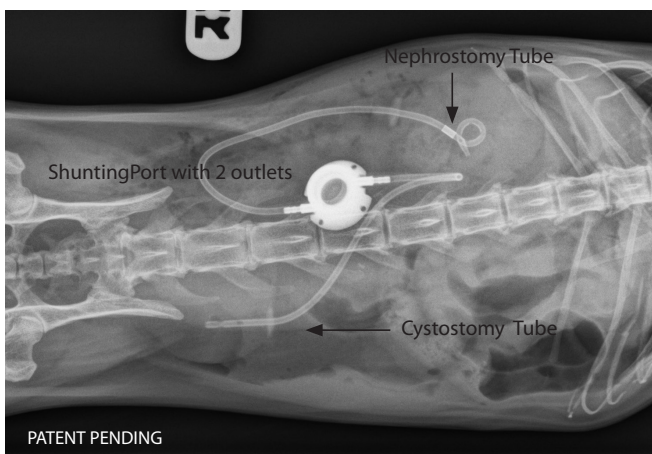
SUBCUTANEOUS URETERAL BYPASS - SUB-SYSTEM™

A New Therapeutic Option for Dogs & Cats to ByPass Ureteral Obstructions

SKOKIE, Illinois - January 16, 2013 - Norfolk Vet Products has announced the launch of a new indwelling device, the SUB System, using a combination locking-loop nephrostomy catheter, cystostomy catheter and an access port, to allow urinary diversion for feline and canine ureteral obstructions. The SUB device is the only subcutaneous system, completely indwelling, that can be flushed and sampled to ensure patency, sample urine, and perform a contrast ureteropyelogram when needed. The SUB system is used for ureteral strictures, ureterolithiasis and neoplastic induced ureteral obstructions. The availability of the SUB offers an option when stent placement is either not possible or has failed and being located totally subcutaneously, avoids the complications associated with externalized pelvic drainage.

The SUB is placed with fluoroscopic and surgical assistance using a Seldinger technique. Once the nephrostomy and cystostomy tubes are in place and nephroplexy and cystoplexy performed, they are trimmed, tunneled and attached to a shunting (2 outlet) titanium access port. A surgical manual is provided with each SUB system.

The SUB system, was designed and developed by Norfolk Vet Products in collaboration with veterinarians at The Animal Medical Center in New York and is available world-wide. Norfolk Vet Products is a division of Norfolk Medical Products and was incorporated in the state of Illinois in 1981. All products are manufactured in their 11,000 sq. ft. facility in Skokie, Illinois. Norfolk Medical Products is FDA regulated and ISO 13485 certified.



Other speciality devices in the Norfolk Vet Products portfolio include; the AUS-Port System, the Artificial Urethral Sphincter Port System, an indwelling system, that accommodates percutaneous, on-demand, long-term relief from urinary sphincter mechanism incontinence, in cases that are unresponsive to medical management, and the PleuralPort, an indwelling system for the management of pleural effusions and delivery of intracavitary chemotherapy.